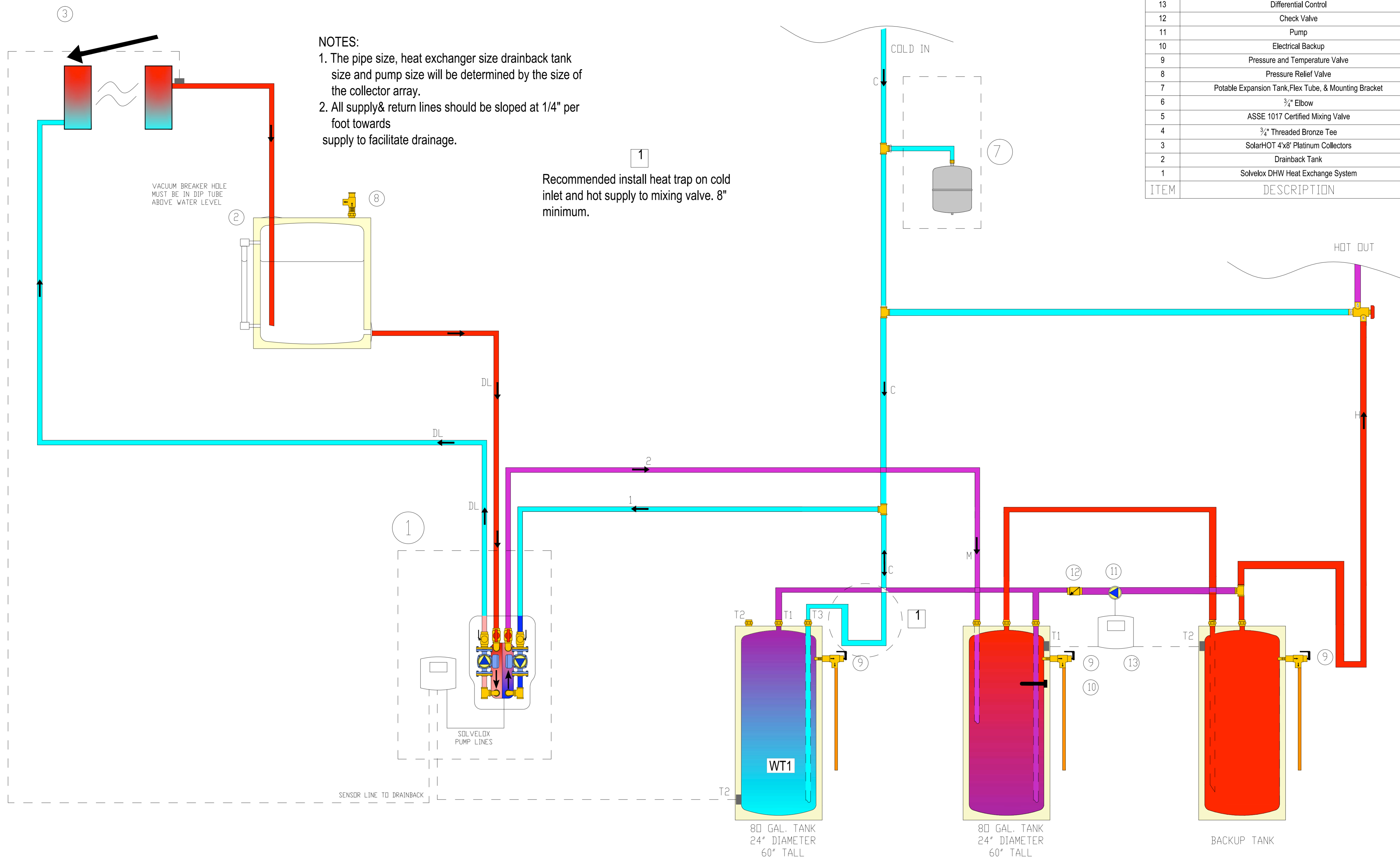


13	Differential Control	1
12	Check Valve	1
11	Pump	1
10	Electrical Backup	1
9	Pressure and Temperature Valve	2
8	Pressure Relief Valve	1
7	Potable Expansion Tank, Flex Tube, & Mounting Bracket	1
6	3/4" Elbow	2
5	ASSE 1017 Certified Mixing Valve	1
4	3/4" Threaded Bronze Tee	3
3	SolarHOT 4'x8' Platinum Collectors	TBD
2	Drainback Tank	1
1	Solveox DHW Heat Exchange System	1
ITEM	DESCRIPTION	QTY

NOTES:
 1. The pipe size, heat exchanger size drainback tank size and pump size will be determined by the size of the collector array.
 2. All supply & return lines should be sloped at 1/4" per foot towards supply to facilitate drainage.

1
 Recommended install heat trap on cold inlet and hot supply to mixing valve. 8" minimum.

VACUUM BREAKER HOLE MUST BE IN DIP TUBE ABOVE WATER LEVEL



REVISIONS

NO.		REVISION	DATE	BY
3				
2				
1				

THIS DOCUMENT CONTAINS CONFIDENTIAL AND TRADE SECRET INFORMATION WHICH IS THE PROPERTY OF SOLARHOT. ANY REPRODUCTION OR USE OF SAID INFORMATION FOR ANY PURPOSE OTHER THAN THAT IN CONNECTION WITH WHICH SAID INFORMATION WAS SUPPLIED MAY NOT BE MADE WITHOUT EXPRESS WRITTEN PERMISSIONS OF SOLARHOT. THIS DOCUMENT IS TO BE RETURNED TO SOLARHOT UPON REQUEST AND IN ALL EVENTS UPON COMPLETION OF THE PURPOSE FOR WHICH IT IS LOANED.		TOLERANCES UNLESS OTHERWISE SPECIFIED X.XXX ±0.010 X.XXXX ±0.005 X.XXXXX ±0.0025 ANGULAR DIM ±0.25° CONCENTRICITY 0.010 T.I.R.	
---	--	---	--

DRAWN BY: Jessica Gretsch DRAWN DATE: 8/6/2009	DESCRIPTION: Double Tank Drainback System w Electric Backup
APPROVED BY: [Signature] REV: 0	SHEET: 1 OF 1 SCALE: NTS DWG SIZE: D DRAWING NO: SCHEM0087